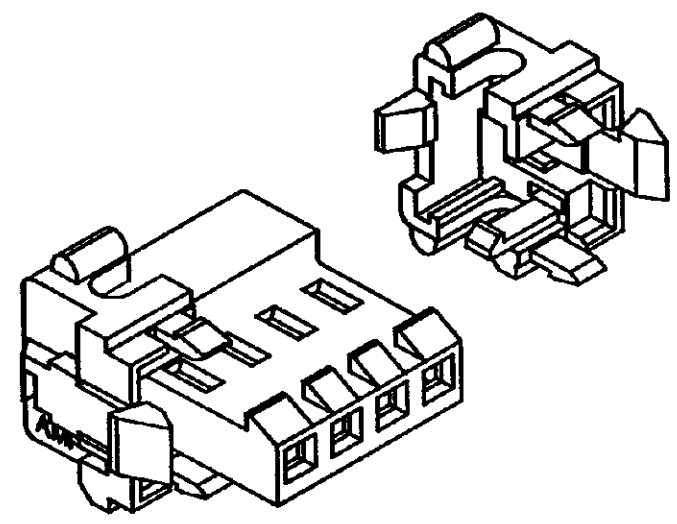
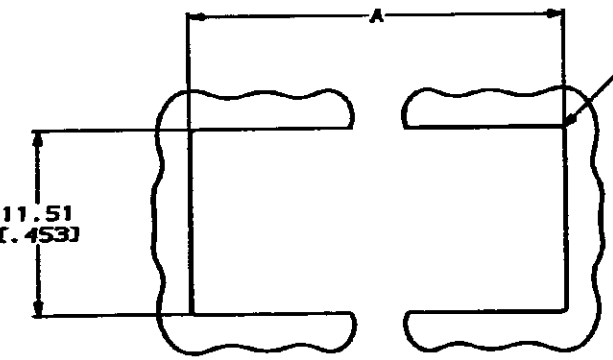


DRAWING MADE IN THIRD ANGLE PROJECTION  
 THIS DRAWING IS UNPUBLISHED. RELEASED FOR PUBLICATION  
 © COPYRIGHT 19 BY AMP INCORPORATED. ALL DIMENSIONAL VALUES ARE IN INCHES.

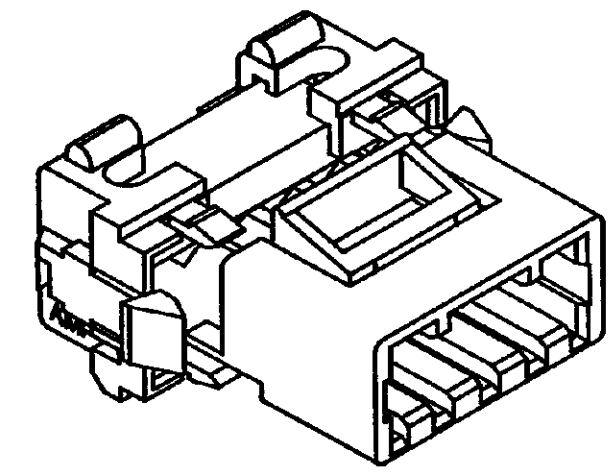
REV. NO.		DATE		DESCRIPTION	
CH	54			6	REV AND REDWN PER ECN CH-3503



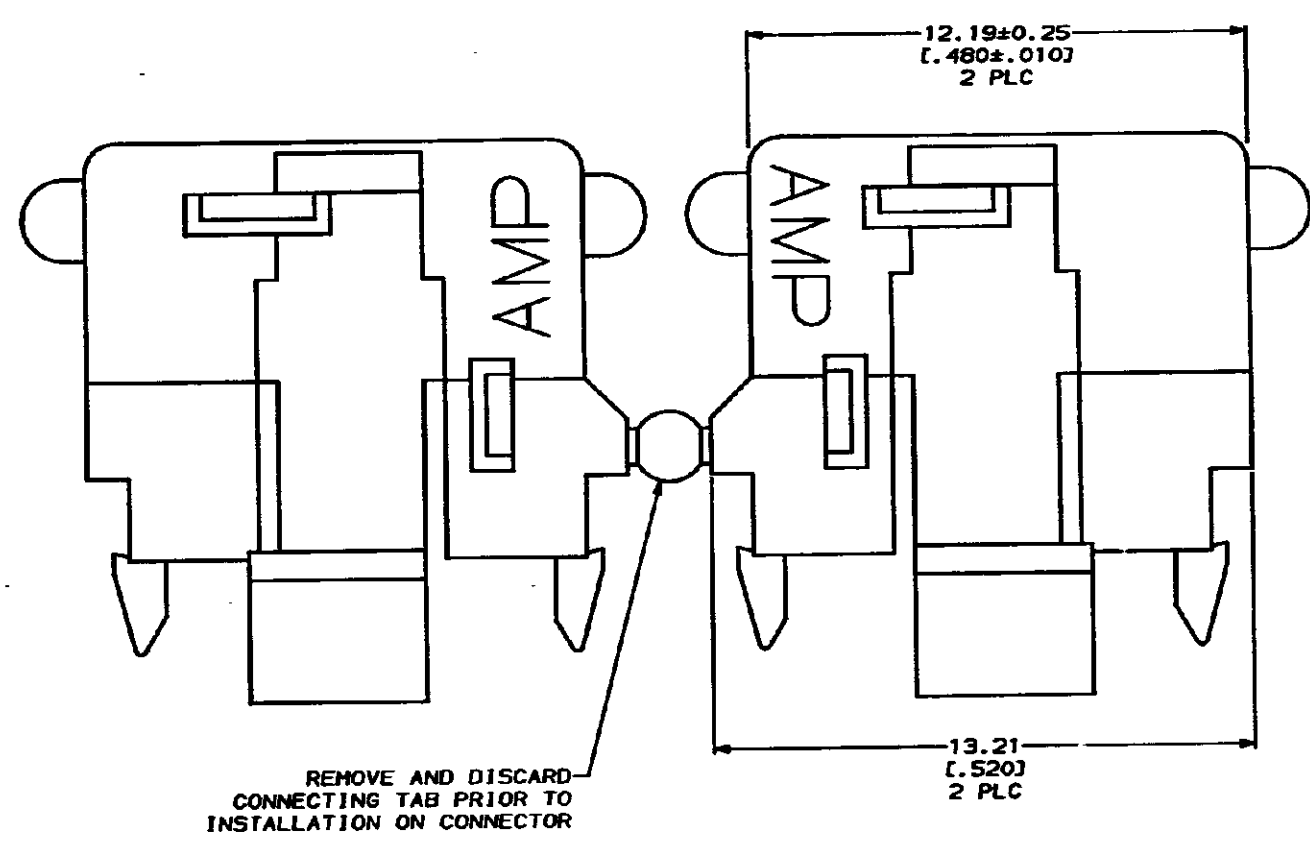
MTA 156 WIRE TO POST CONNECTOR WITH END CAPS INSTALLED  
 (RECOMMENDED APPLICATION)



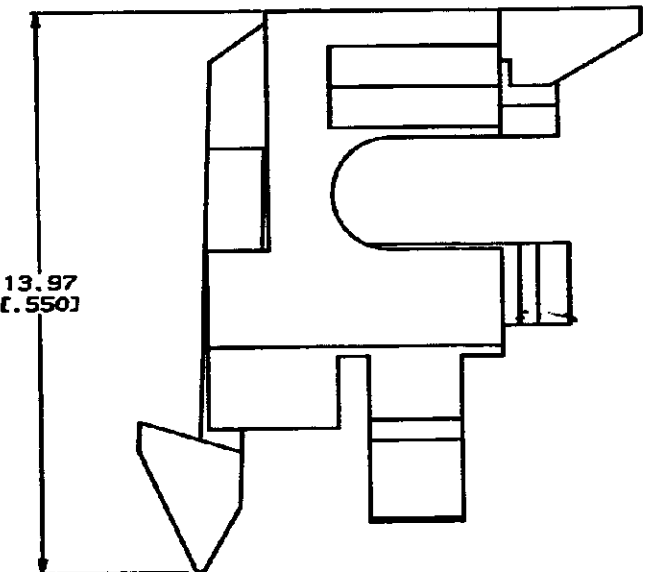
RECOMMENDED PANEL CUTOUT  
 PANEL THICKNESS = 1.70 [.067] MAX  
 SCALE 4:1



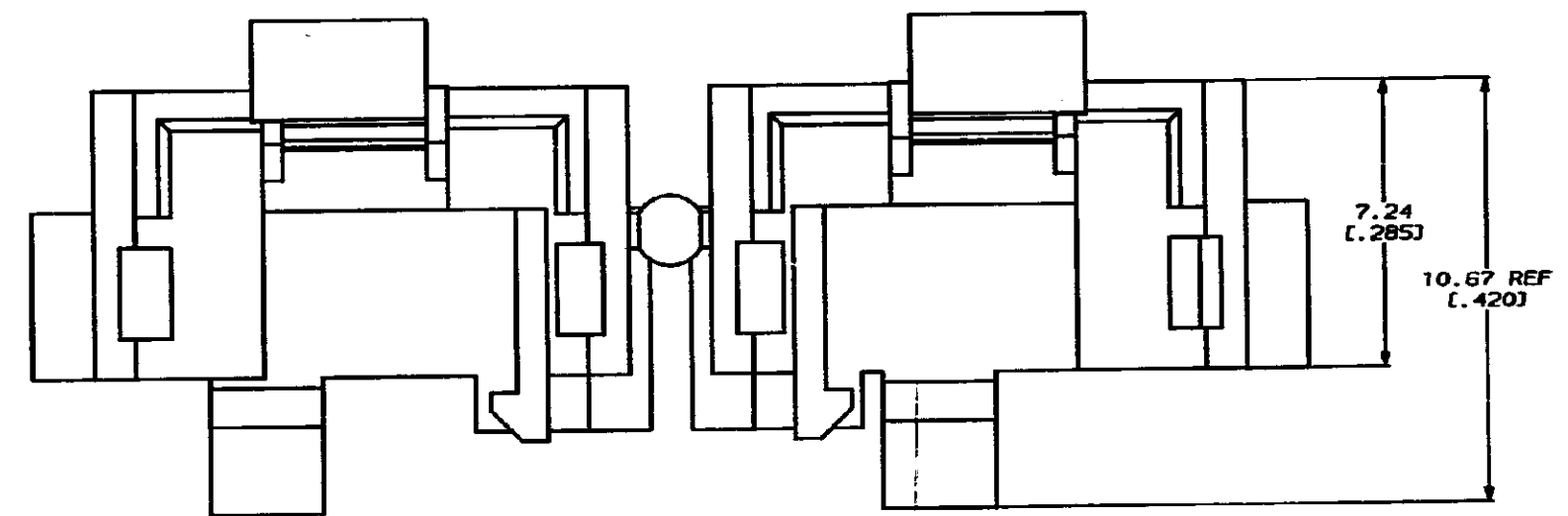
MTA 156 POSTED CONNECTOR WITH END CAPS INSTALLED  
 (ALTERNATE APPLICATION)



REMOVE AND DISCARD  
 CONNECTING TAB PRIOR TO  
 INSTALLATION ON CONNECTOR



1. DIMENSIONS IN BRACKETS  
 ARE IN INCHES.



	12 POSITION	24 POSITION	101.90 [4.012]
12 POSITION	54.36 [2.140]		
9 POSITION	42.47 [1.672]		
6 POSITION	30.58 [1.204]		
4 POSITION	22.66 [.892]	15 POSITION	66.24 [2.608]
3 POSITION	18.69 [.736]		
CONNECTOR SIZE	A	CONNECTOR SIZE	A

**METRIC**

DO NOT SCALE PRINT. UNLESS SPECIFIED DIMENSIONS IN MM (INCHES) TOLERANCES ON: 2 PLC DEC ± 3 PLC DEC ± 0.13 (.005) ANGLES ±		OR C. M. 8-27-91 R. M. 8-27-91 J. M. 8-27-91	<b>AMP</b> AMP Incorporated Harrisburg, PA 17105-3000
MATERIAL NYLON, UL 94V-2 BLACK	PRODUCT SPEC -	NAME END CAP, PANEL MOUNTING, MTA 156	PART NO 641440-1
FINISH -	APPLICATION SPEC -	SIZE D 00779	DRAWING NO 641440
WEIGHT -	SCALE 10:1	SHEET 1 OF 1	CUSTOMER DRAWING

AMP INCORPORATED  
 HARRISBURG, PA 17105-3000